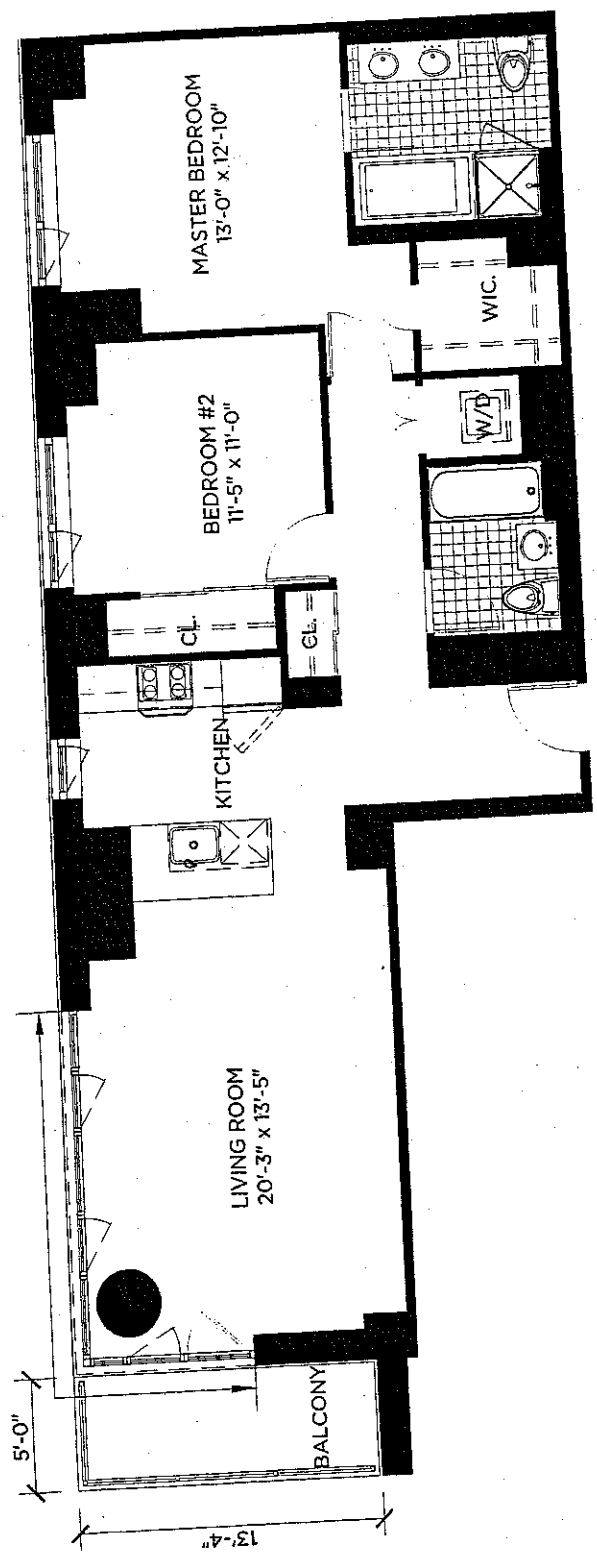


BROOKLYN, NY

100 JAY STREET

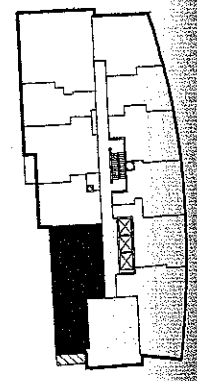
J CONDOMINIUM

NOTE:
THIS CORNER WINDOW IS
TYPICALLY FLOOR TO CEILING
VISION GLASS, EXCEPT AT
FLOORS 7, 10, 14, 17, 20, 23, 26, &
29, WHERE THERE IS A 2'-4" SILL
HEIGHT.



UNIT TYPE 'C'
 2 BEDROOM
 2 BATH
 AREA: 1,183 SF.
 110 SM.

FLOOR NUMBER
 5th-31st FLOORS



ALL DIMENSIONS ARE APPROXIMATE AND SUBJECT TO
 NORMAL CONSTRUCTION VARIANCES AND TOLERANCES.
 SPONSOR RESERVES THE RIGHT TO MAKE CHANGES.



J CONDOMINIUM

100 JAY STREET

BROOKLYN, NY